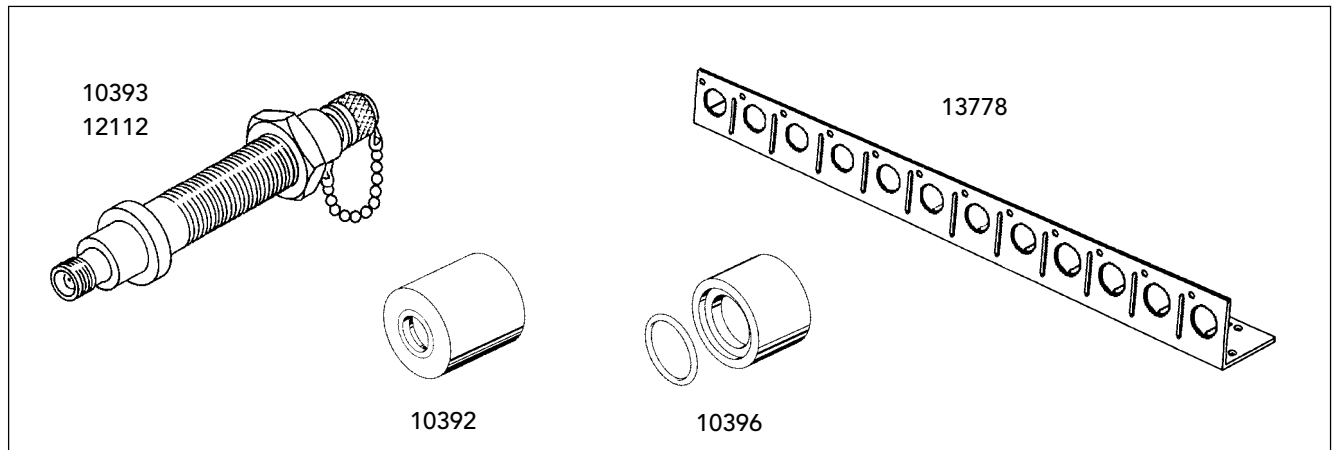


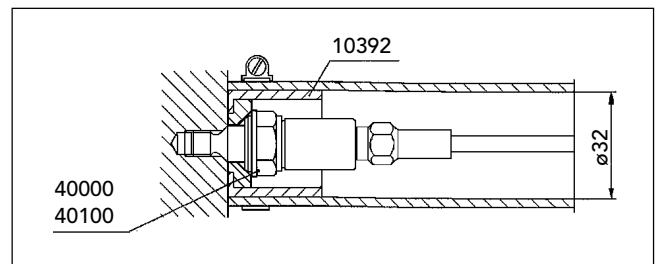
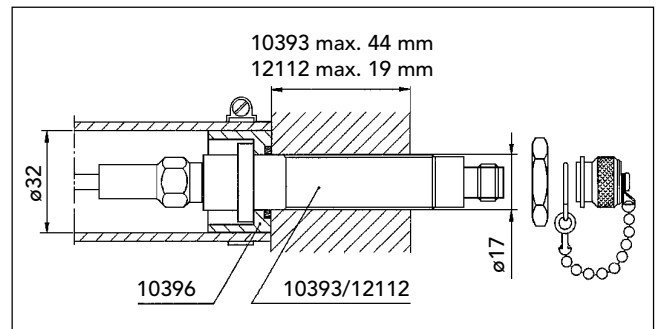
# Accessories for Remote Monitoring



The terminal bracket SPM 13778 is supplied with holes for 12 sealed terminal connectors 13777 (TNC-TNC) or 13781 (TNC-BNC) alternatively crimp connectors SPM 93090 (BNC) or 93113 (TNC). The bracket is made of PVC and can easily be divided into desired number of holes.

The parts SPM 10393 and 12112 are bulkhead unions (measuring terminals) for thicker walls or partitions (max 25 mm and 50 mm respectively). They have TNC jacks on both sides and are supplied with sealing ring and a dust cap.

The sealing sleeves are used to attach a flexible protection tube (32 mm inner dia.). The sleeve SPM 10392 can only be used together with standard transducers. The transducer is pressed through the teflon sealing when tightening. The sleeve SPM 10396 can be used together with bulkhead unions SPM 10393 and 12112.



## Technical Data

### Terminal bracket 13778

Material: PVC  
Dimensions: 310 x 25 x 25 x 3 mm  
Temp. range: -20°C to +70°C

### Bulkhead union 10393 and 12112

Material: Nickel plated brass

### Sealing sleeve 10392 for transducer

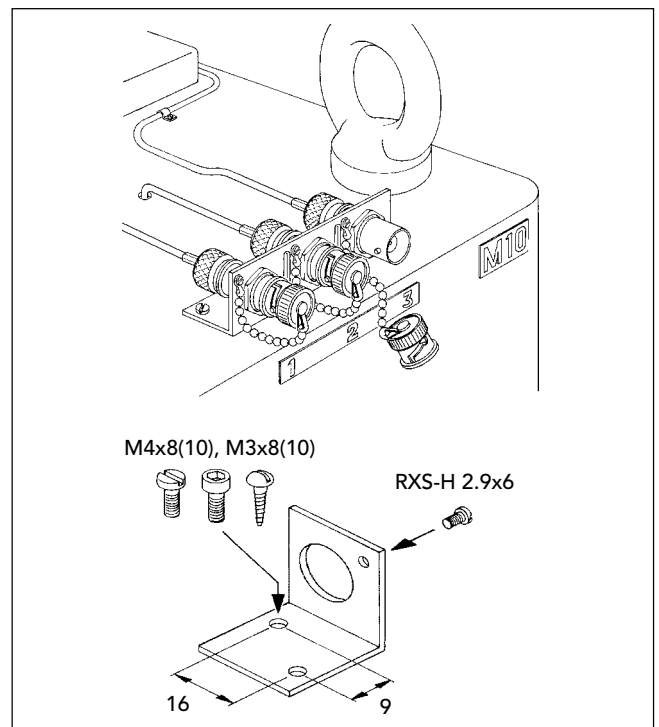
Material: Brass/Reinforced teflon

### Sealing sleeve 10396 for bulkhead union

Material: Brass/Nitrile

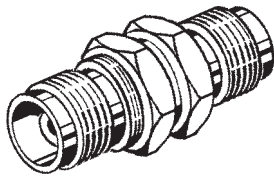
## Part Numbers

13778	Terminal bracket
10393	Bulkhead union, max. wall thickness 50 mm
12112	Bulkhead union, max. wall thickness 25 mm
10392	Sealing sleeve for transducer
10396	Sealing sleeve for bulkhead union

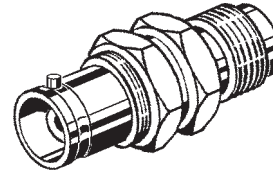


# Terminal Connectors

**SPM 13777**



**SPM 13781**



The terminal connectors SPM 13777 (TNC-TNC) and 13781 (TNC-BNC) are mainly used as measuring terminals, connecting a hand-held shock pulse meter with a permanently installed shock pulse transducer. They are then normally mounted on the terminal bracket SPM 13778.

The terminal connectors can also be used as bulkhead unions for walls with a thickness of up to 4.5 mm. A sealed connection is achieved by using SPM 13008 as TNC cable connector.

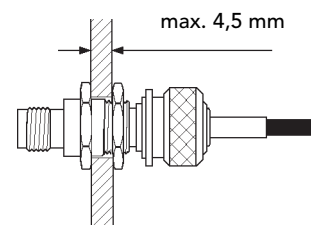
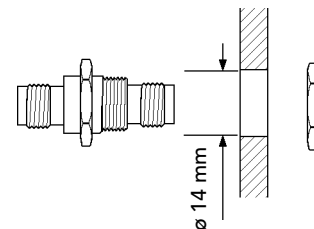
The open end of the connectors should always be protected by dust caps, SPM 93035 for TNC and SPM 93061 for BNC.

## Technical data

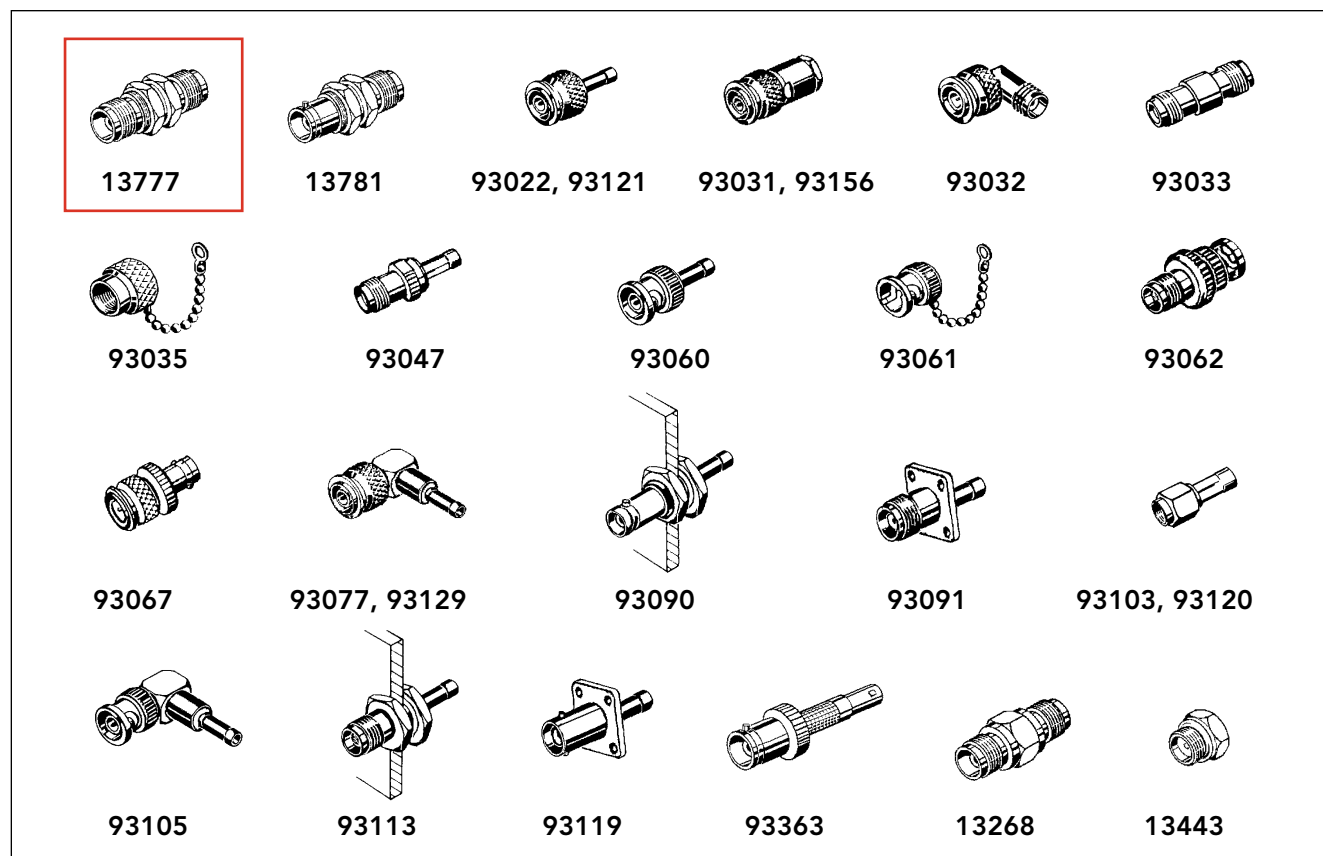
Total length	35 mm
Thread	TNC
Nut width	17 mm
Mounting hole	ø14 mm
Max wall thickness	4.5 mm
Material, connector body	Stainless acid proof steel, Sandvik Grade:1802, EN:1.4523
Material, nuts	Nickel plated brass

## Ordering numbers

13777	Terminal connector, TNC-TNC
13781	Terminal connector, TNC-BNC



# Connectors and accessories for coaxial cables



The listed equipment is used for SPM coaxial cable installations for shock pulse and vibration monitoring. See SPM installation instructions and application descriptions for details.

## TNC connections

13777	TNC-TNC terminal connector
13781	TNC-BNC terminal connector
93022	TNC cable connector, plug, crimp
93031	TNC cable connector, plug, screw-type
93032	TNC angle adapter, plug-jack
93033	TNC adapter, jack-jack
93035	TNC dust cap for jack
93047	TNC cable connector, jack, crimp
93067	TNC-BNC adapter, plug-jack
93077	TNC angle connector, crimp
93091	TNC terminal connector, flange, crimp
93113	TNC terminal connector, crimp
93121	TNC cable connector, crimp, for cable 90146
93129	TNC angle connector, solder/crimp, for cable 90146
93149	Contact pin, TNC/BNC for cable 90176
93156	TNC cable connector, screw-type with strain relief, solder/screw type

## Sealed TNC connections

13008	TNC cable plug, crimp (see TD-009)
15163	TNC cable plug, crimp (see TD-262)
15291	TNC cable plug, composite, crimp (see TD-257)
13268	TNC adapter, jack-jack, for sealed connection
13443	Sealing plug for TNC connector 13008

## BNC connections

93060	BNC cable connector, plug, crimp
93061	BNC dust cap
93062	BNC-TNC adapter, plug-jack
93090	BNC terminal connector, crimp
93105	BNC angle connector, crimp
93119	BNC terminal connector, flange, crimp
93363	BNC-LEMO adapter (fits Bearing Checker)

## SMA connections

93103	SMA cable connector, plug, crimp (fits TRV-01)
93120	SMA cable connector, crimp, for cable 90146

## SMB connections

93286	SMB cable connector, crimp
-------	----------------------------

## Sealed SMB connections

14990	SMB cable plug, crimp (see TD-248)
15164	SMB cable plug, crimp (see TD-261)
15388	SMB cable plug, composite, crimp (see TD-258)

